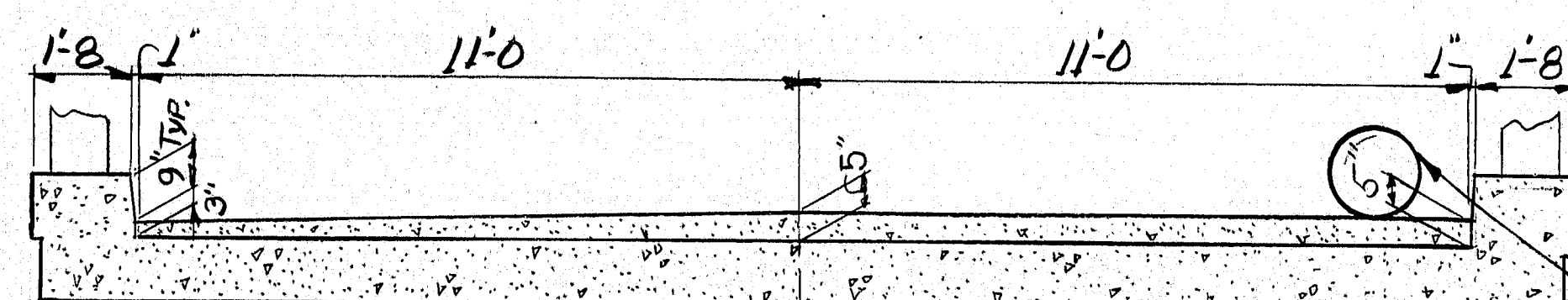


PLAN

NOTE:

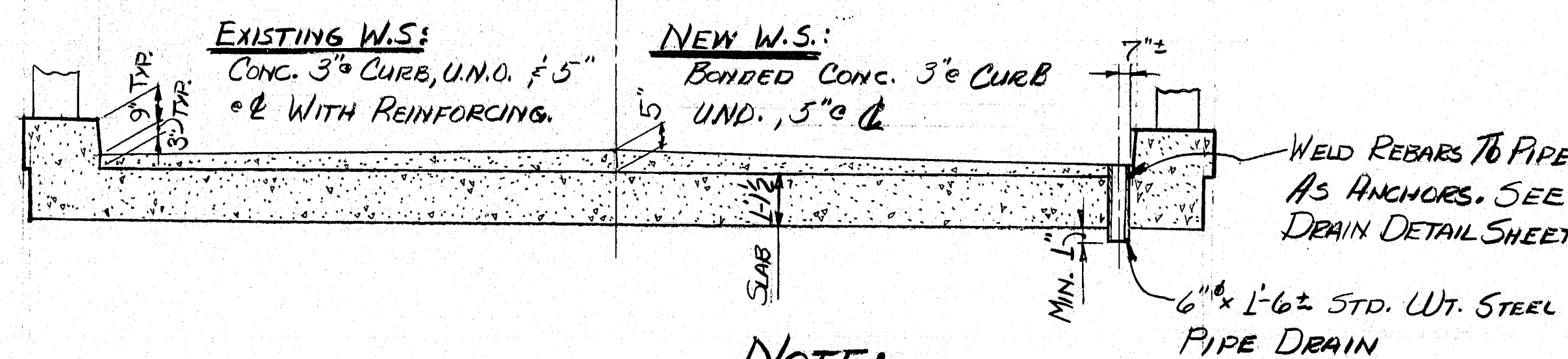
LOCATIONS OF NEW DRAINS TO BE IN APPROX. SAME LOCATION AS EXISTING, EXCEPT THEY ARE TO BE LOCATED IN DECK.



VIEW C-C

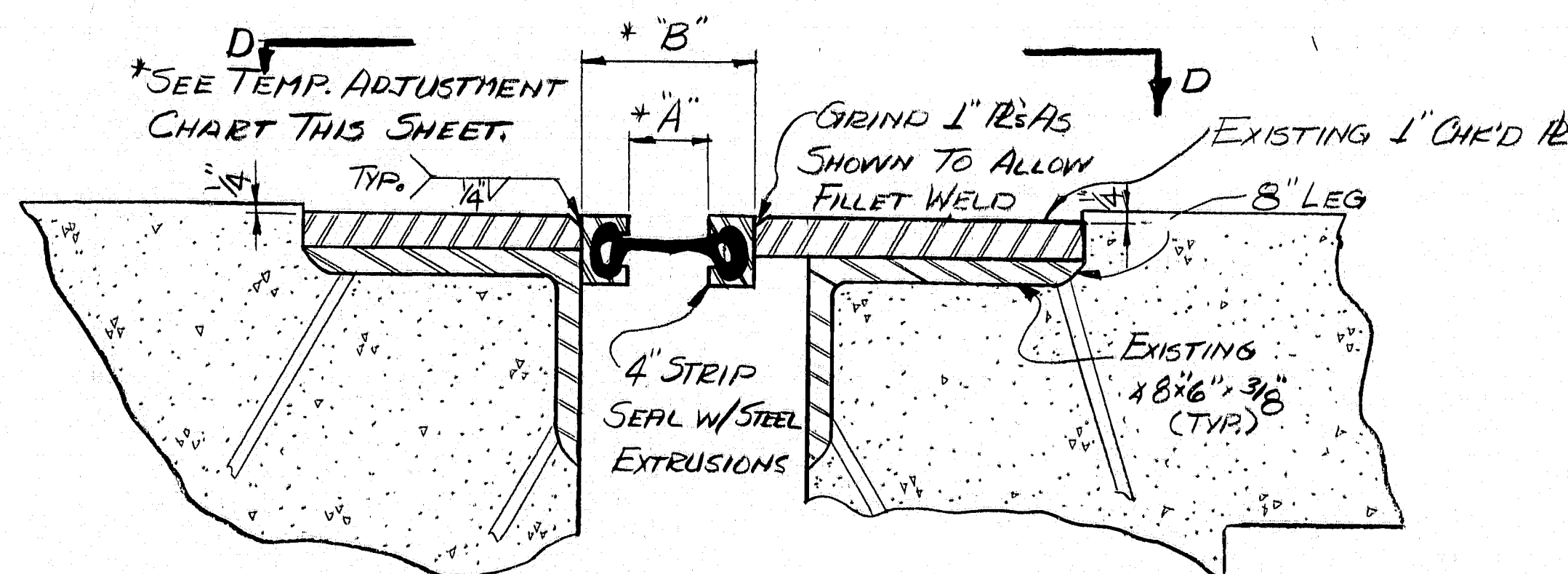
NOTE:

DIMENSIONS NOT SHOWN IN VIEW C-C, TO BE SAME AS IN TYP. TRANS. SECTION BELOW.

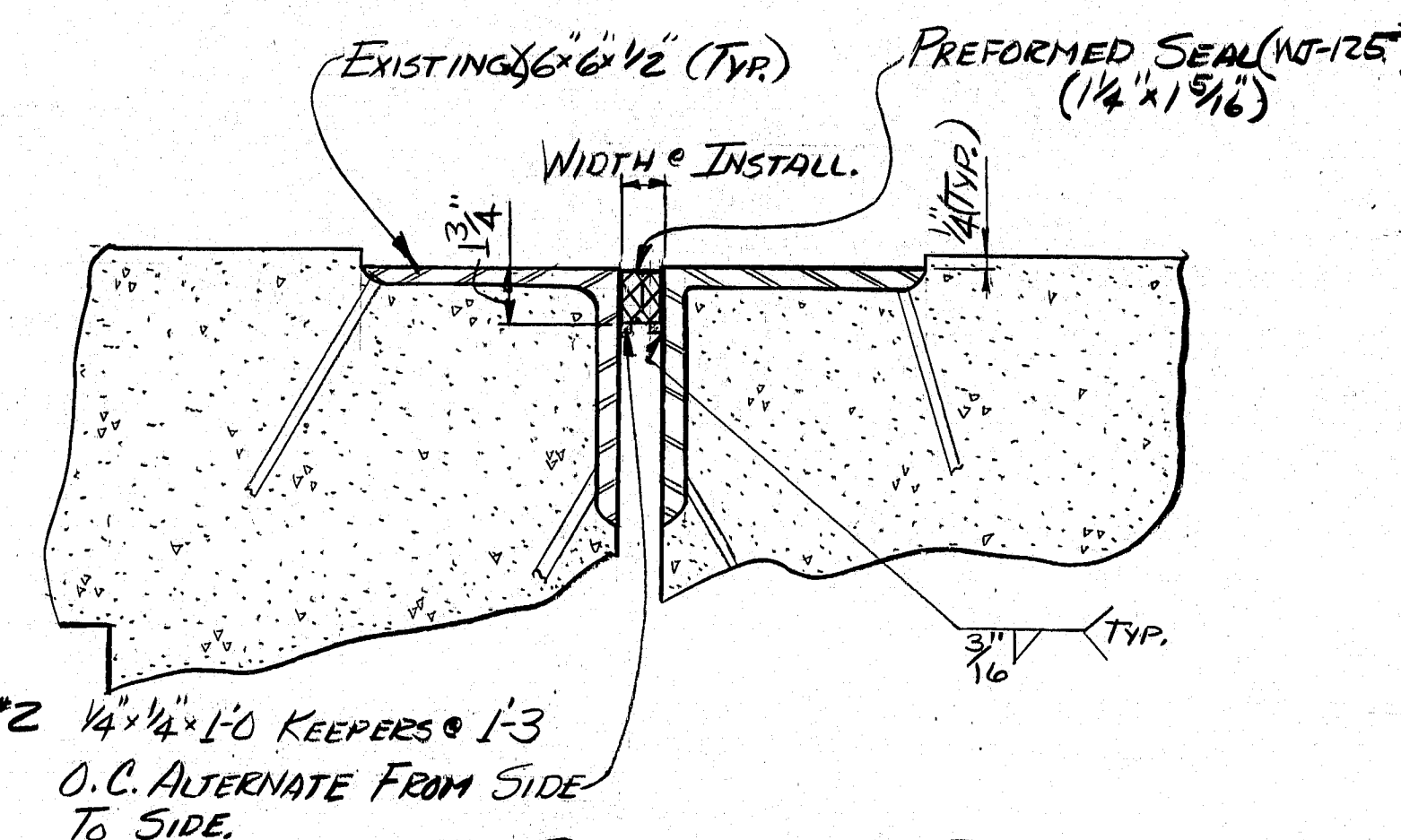


TYPICAL TRANSVERSE SECTION

SPANS 1 & 5 ONLY
TYPICAL EXCEPT FOR D.S. HALF OF SPAN #5 WHERE W.S. IS VARIABLE. (SEE VIEW C-C)



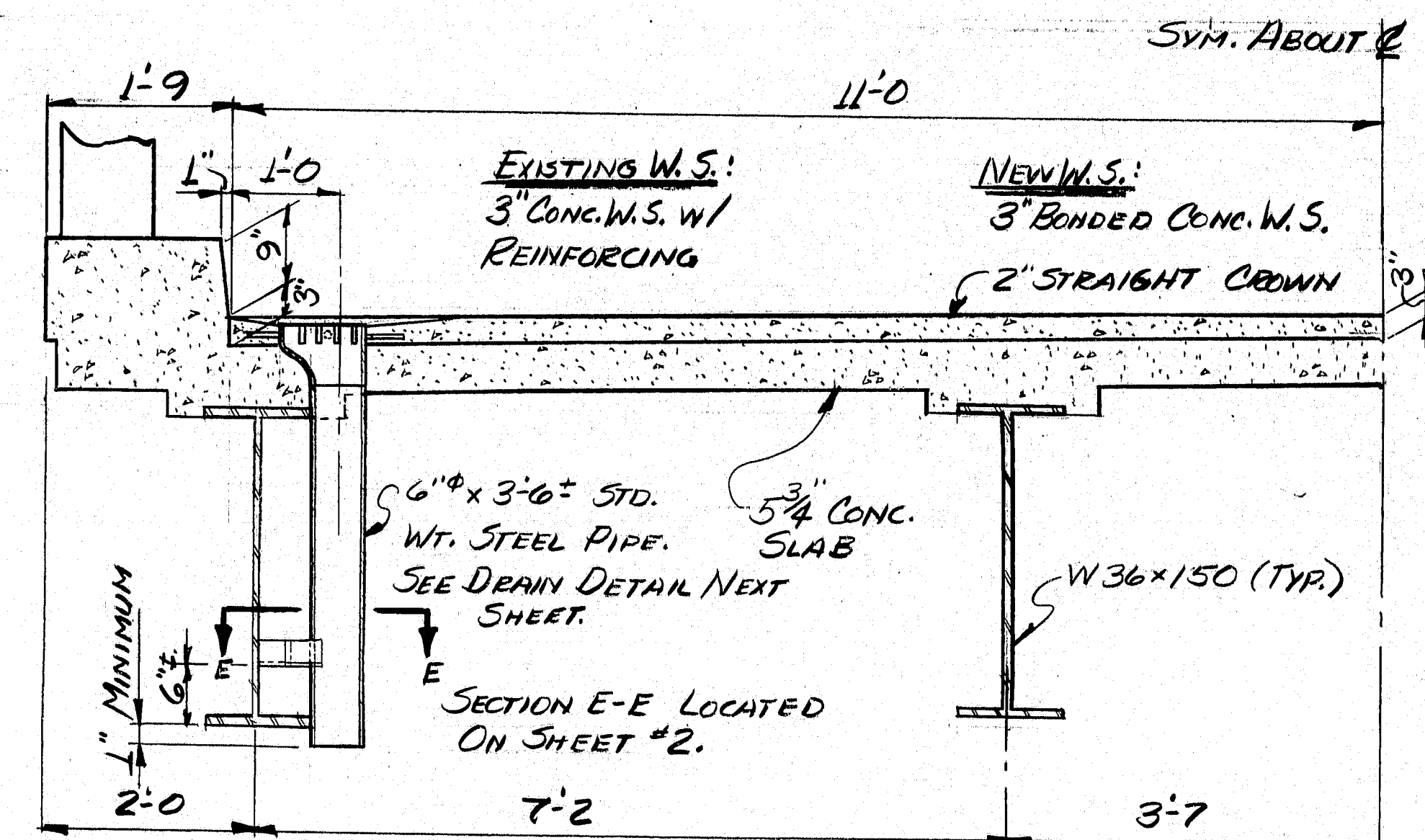
SECTION A-A



SECTION B-B

NOTE:

CUT TIPS OF FINGERS AS SHOWN IN SHADED PORTION. USE PIECES TO FILL GAP AFTER EXTRUSIONS ARE IN PLACE. SIDES **MUST** BE CUT **PARALLEL**.



HALF TRANSVERSE SECTION

SPANS 2 thru 4 inc.

NOTE:
DO NOT WELD DEBRIN TO BEAM FLANGES

USE W/4" (5-400) STRIP SEAL ONLY

		TEMPERATURE ADJUSTMENT CHART									
DIM.	TEMP. (F°)	10°	20°	30°	40°	50°	60°	70°	80°	90°	
"A"	OPENING	2 3/8"	2 1/4"	2 1/8"	2 1/16"	1 1/2"	1 1/8"	1 1/16"	1 1/8"	1 1/16"	
DIM.	TEMP. (F°)	10°	20°	30°	40°	50°	60°	70°	80°	90°	
"B"	OPENING	5 3/8"	5 1/4"	5 1/8"	4 7/8"	4 1/2"	4 1/4"	4 1/8"	4 1/8"	4 1/16"	

VIEW D-D

SCOPE OF WORK

REMOVE EXISTING CONC. W.S.. INSTALL STRIP SEAL @ PIER #4 AS SHOWN. INSTALL PREFORMED SEAL @ PIER #1. FILL EXISTING DRAINS WITH CONC. INSTALL NEW DECK DRAINS. PLACE NEW BONDER CONC. W.S.

MATERIALS

- 20'-10" x 6" x 7" STD. WT. STEEL ECCENTRIC REDUCER
- 761.4 ± ~ 6" STD. WT. STEEL PIPE
- 671.4 ± ~ BAR 1 1/2" x 1/2"
- 121.4 ± ~ 3/4" x 3/4" x 3/4" (OR SIZE IN STOCK)
- 201.4 ± ~ BAR 1/4" x 1/4"
- 48 ~ 1/2" x 6" MACH. BOLTS
- 16 1/4" x 12 1/8" x 12" (CUT 4" R'S FROM THIS)
- 1-4" STRIP SEAL (5-400) x 27'-0" LONG
- 541.4 ± ~ TYPE A" STEEL EXTRUSIONS FOR ABOVE 4" STRIP SEAL
- 1-1 1/4" x 1 1/8" PREFORMED SEAL x 27'-0" LONG. (WT-125)

EST. CONC. VOLUME

$$\frac{262' \times 22' \times .33}{27} = 70.4 \text{ cu. yd. SAV: } 71.64$$

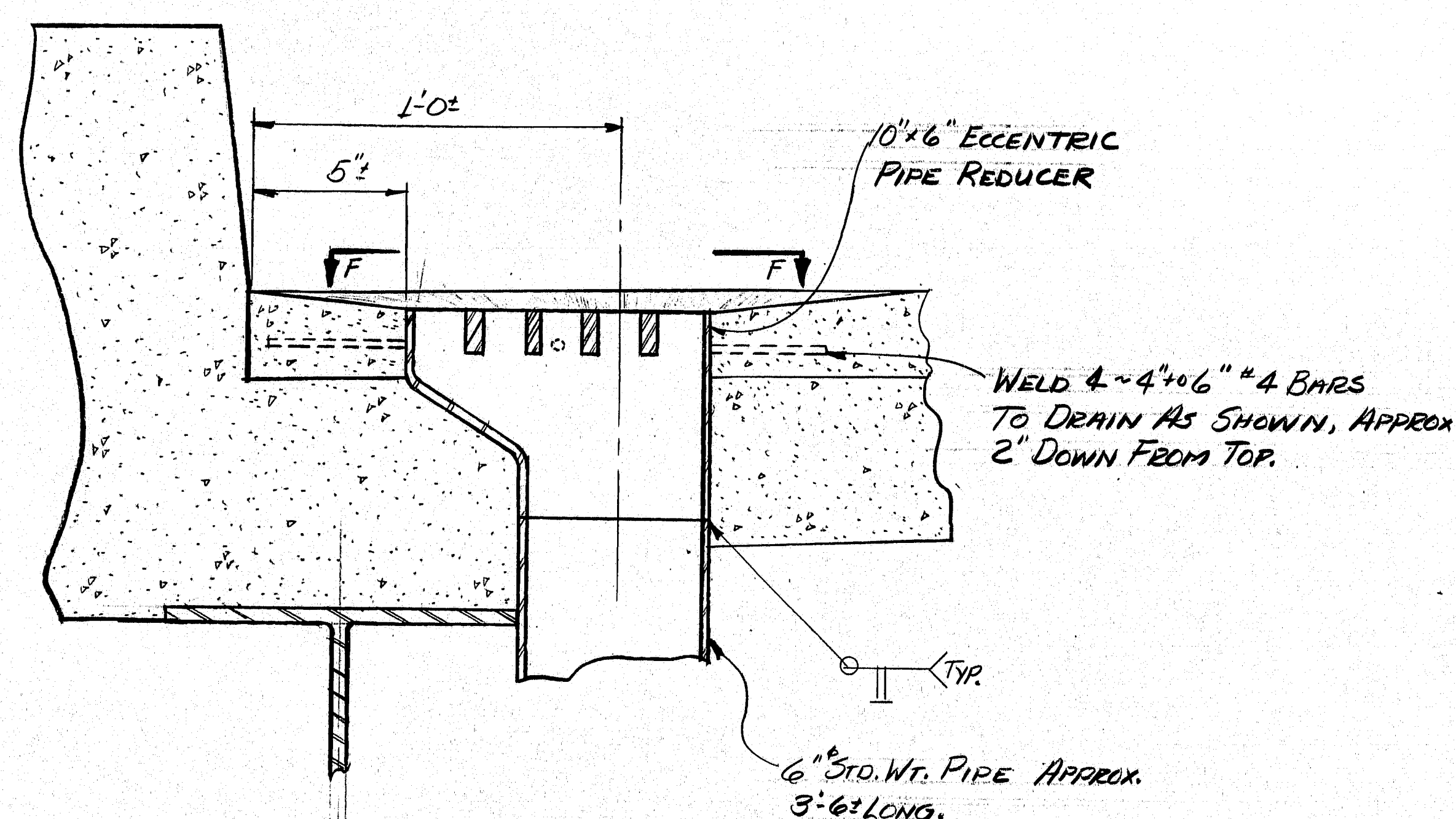
PROJECT DESIGN ENGINEER	DATE
DESIGN - DETAILED	BY
CHECKED	
REVISIONS	
FILED	

BRUNING 44-132-45710-1

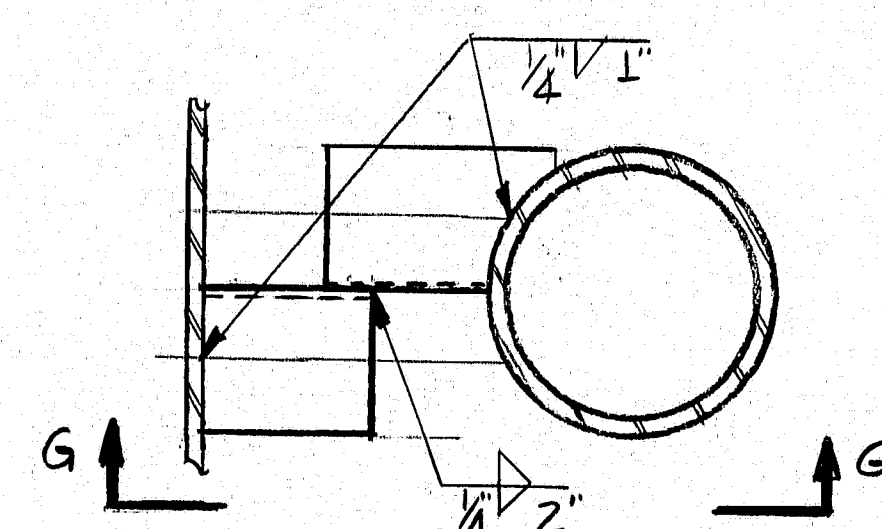
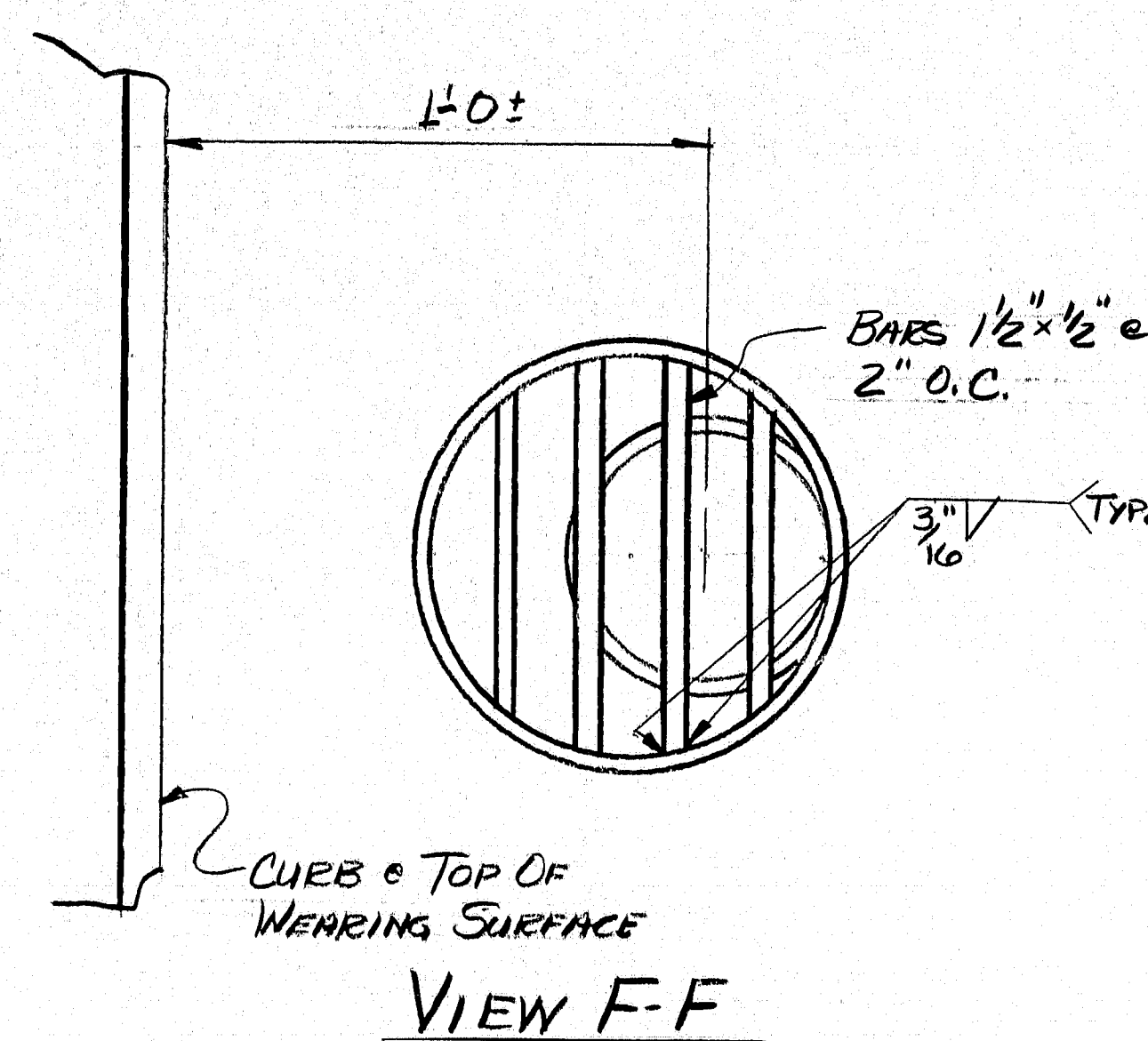
100-413

STATE OF MAINE
DEPARTMENT OF TRANSPORTATION
#3880
LOWER BRIDGE
OVER
EASTERN RIVER
IN THE TOWN OF
DRESDEN
IN
LINCOLN COUNTY
CONC. W.S., DRAINS, SEALS
SHEET 1 OF 2 AUGUSTA, MAINE MAR. 29, 1985

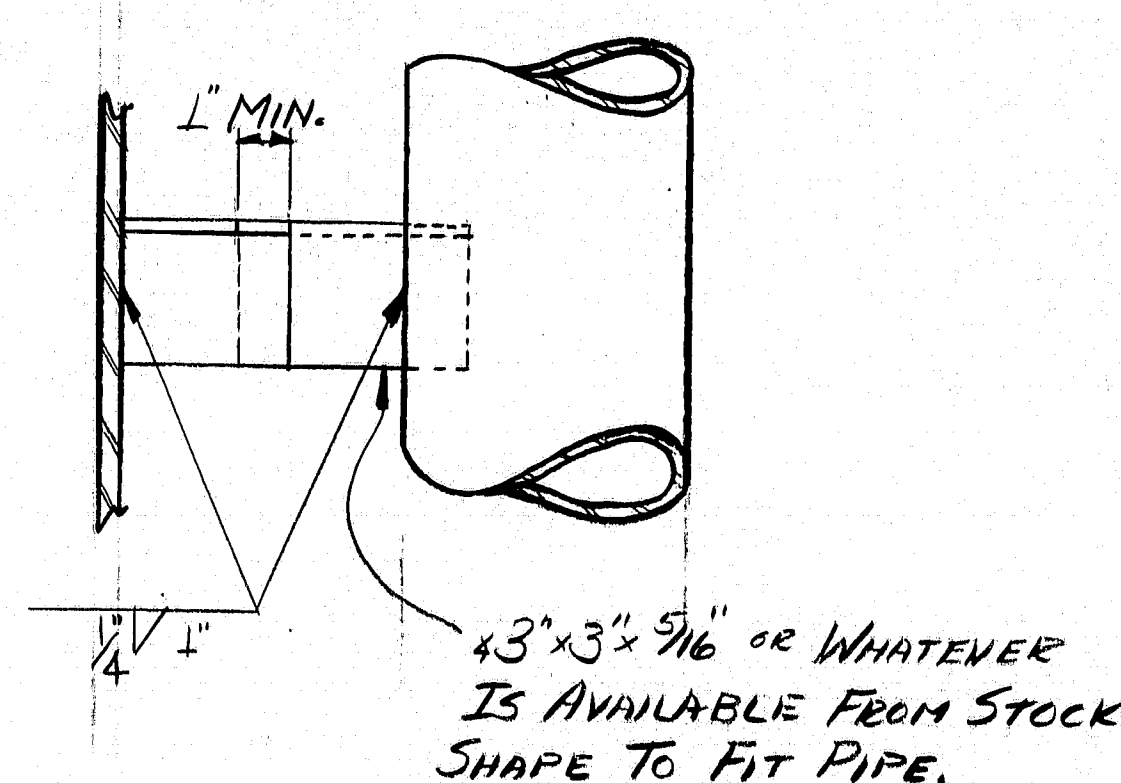
PROJ. NO.	STATE	PROJECT NUMBER	SHEET NO.	TOTAL SHEETS
1	MAINE			



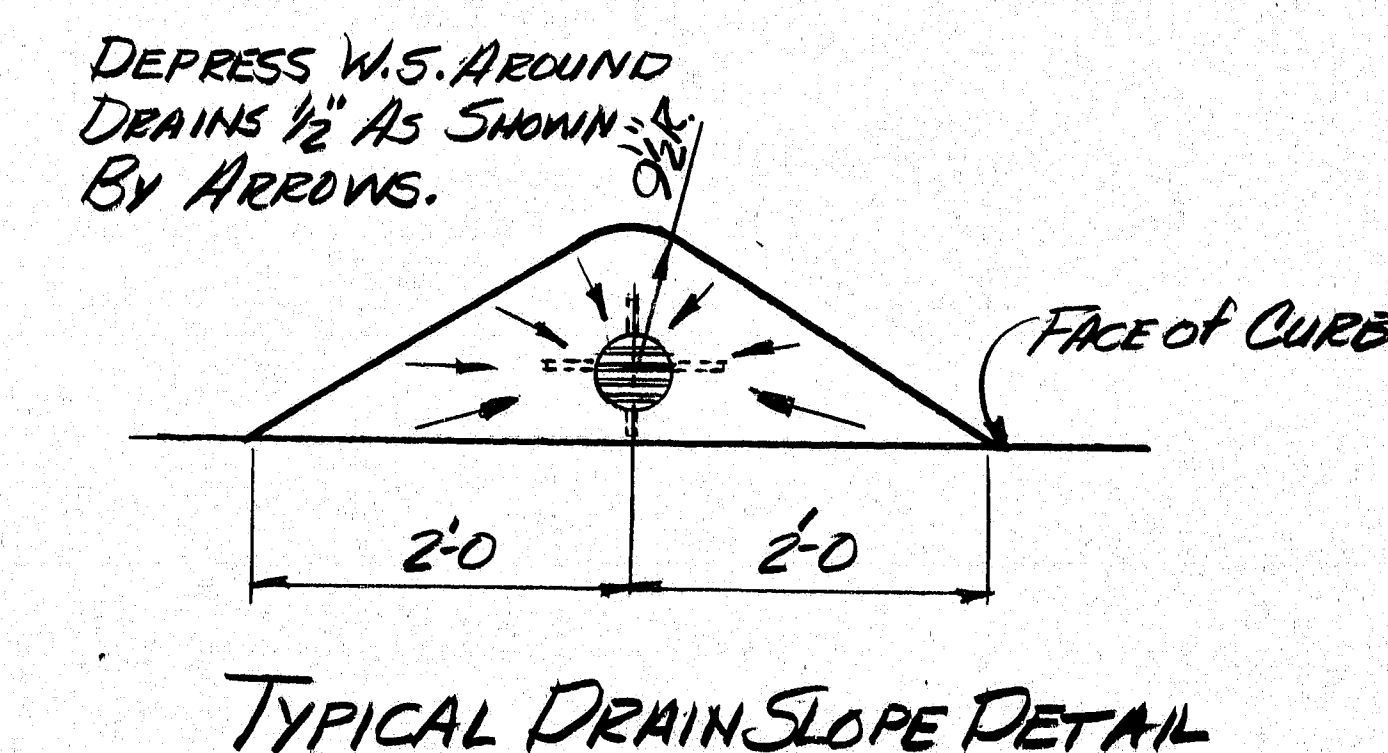
DRAIN DETAIL
SPANS 2 thru 4 INCL.



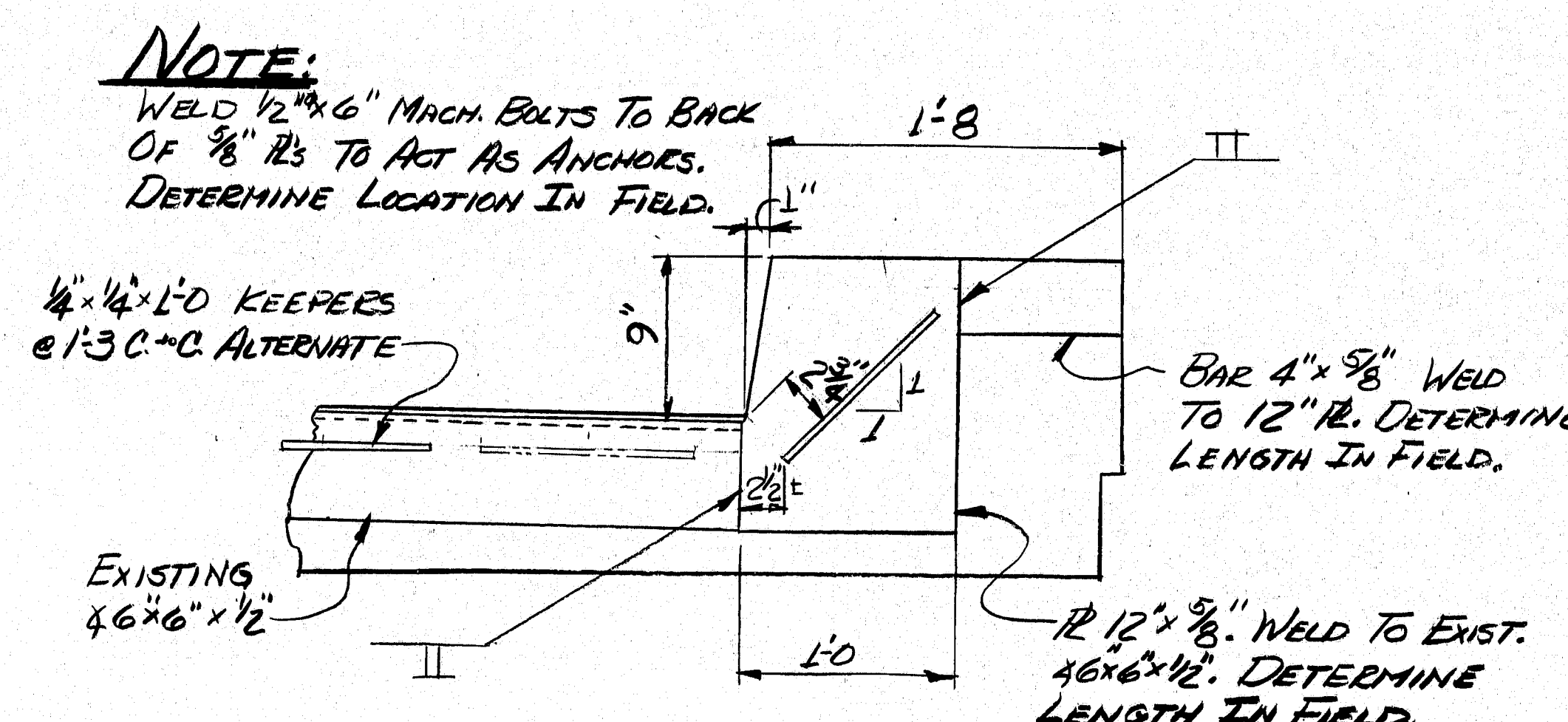
SECTION E-E



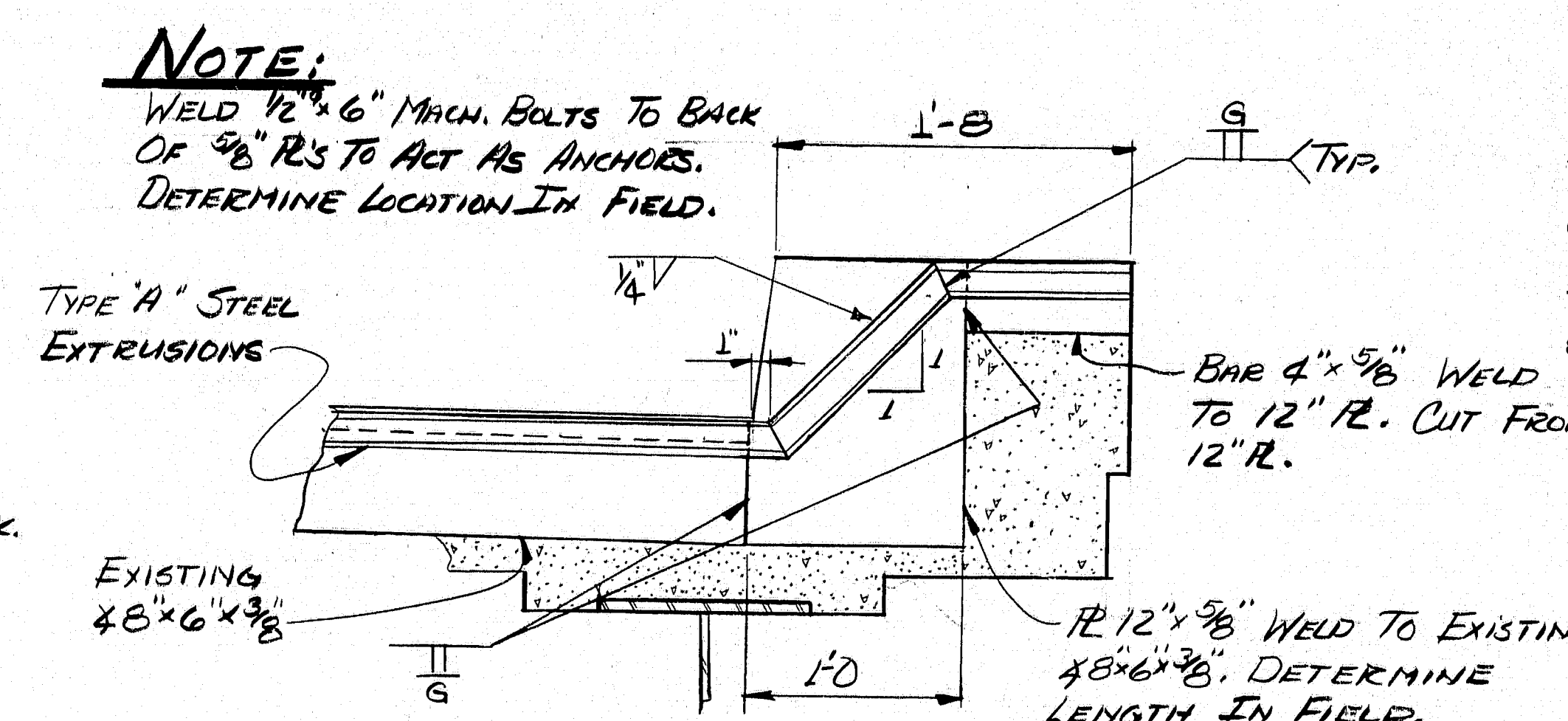
VIEW G-G



TYPICAL DRAIN SLOPE DETAIL



SECTION I-I



SECTION H-H

BONDING GROUT NOTES

- The deck surface must be thoroughly sandblasted and cleaned to remove all dust or loose materials immediately before bonding grout is placed.
- Deck surface to be surface dry with no standing water in pockets or low areas when bonding grout is applied.
- The bonding grout shall consist of equal parts by weight of Portland Cement and concrete sand with the plus #8 material removed and mixed with enough water to give a thick, creamy consistency.
- Bonding grout to be evenly broomed onto the concrete surface ensuring that the entire surface, including face of curb to the finish grade of the wearing surface, is coated and that no excess grout collects in low spots or pockets. Grout shall be thoroughly broomed under and around reinforcing bars.
- Rate of application must be controlled so that the grout does not dry before the new concrete is placed.

GENERAL NOTES

- Remove existing wearing surface.
- If main steel is exposed, concrete should be removed under the steel to a depth of 1" minimum.
- Blast clean the slab before any placement of bonding grout or concrete. NOTE: SLAB IS TO BE SURFACE DRY BEFORE PLACEMENT OF BONDING GROUT.
- Broom on a layer of bonding grout just prior to placing concrete. See note this sheet for bonding grout specifications.
- Concrete to be cured using burlap and water or other approved methods.
- Concrete to be Class "I" and aggregate to be crushed ledge.
- Minimum cover to be 2" unless otherwise noted.
- Chamfer all exposed edges 1/4" unless otherwise noted.

STATE OF MAINE
DEPARTMENT OF TRANSPORTATION
#3880
LOWER BRIDGE
OVER
EASTERN RIVER
IN THE TOWN OF
DRESDEN
IN
LINCOLN COUNTY
CONC. W.S., DRAINS, SEALS
SHEET 2 OF 2 AUGUSTA, MAINE APR. 2, 1985

100-414

PROJECT DESIGN ENGINEER	DATE
DESIGN - DETAILED	1985
REVISIONS	
FIELD CHANGES	
PLANS	

BRUNING 44-132 45710.1